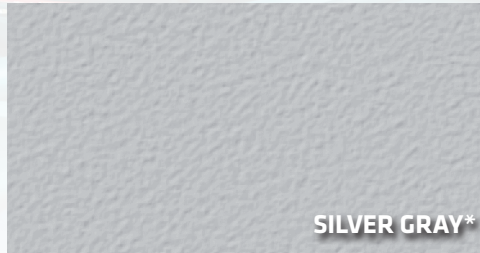
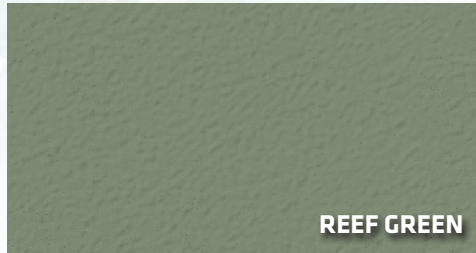


STONGARDTM
MR
MX

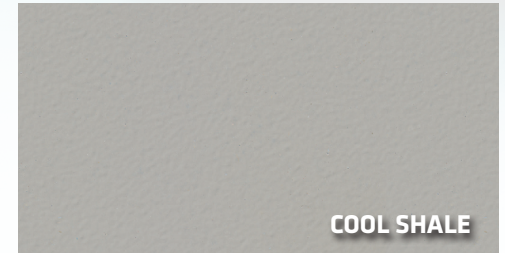
High-performance, chemical and crack-resistant floors formulated for mechanical equipment rooms, pump mezzanines and areas requiring waterproof solutions. Stongard delivers slip resistance and positive side moisture protection.



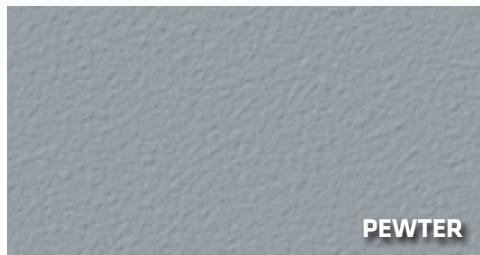
SILVER GRAY*



REEF GREEN



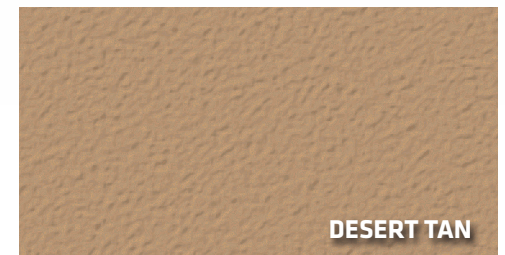
COOL SHALE



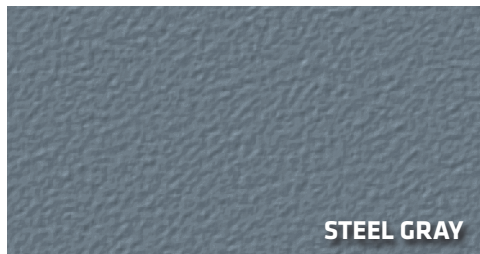
PEWTER



SAGE



DESERT TAN



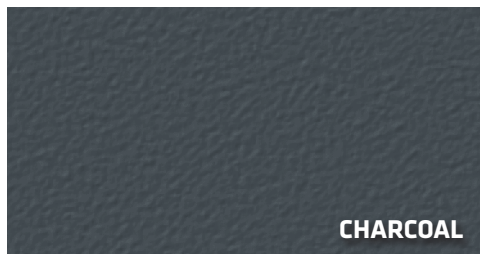
STEEL GRAY



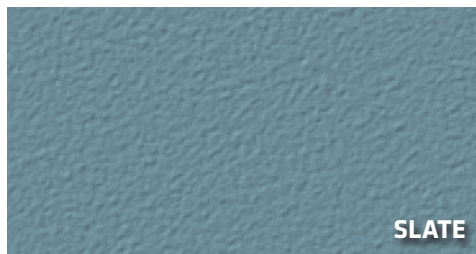
TEAL BLUE



BRICK RED



CHARCOAL



SLATE

*Silver Gray color available with Stongard MR and MX systems only.

Color matching available with additional lead time, minimum order requirements and a slight premium.
Color reproductions are as accurate as modern photography and quality printing methods can produce.
For actual color, please request a sample. www.stonhard.com. ©2024 Stonhard

